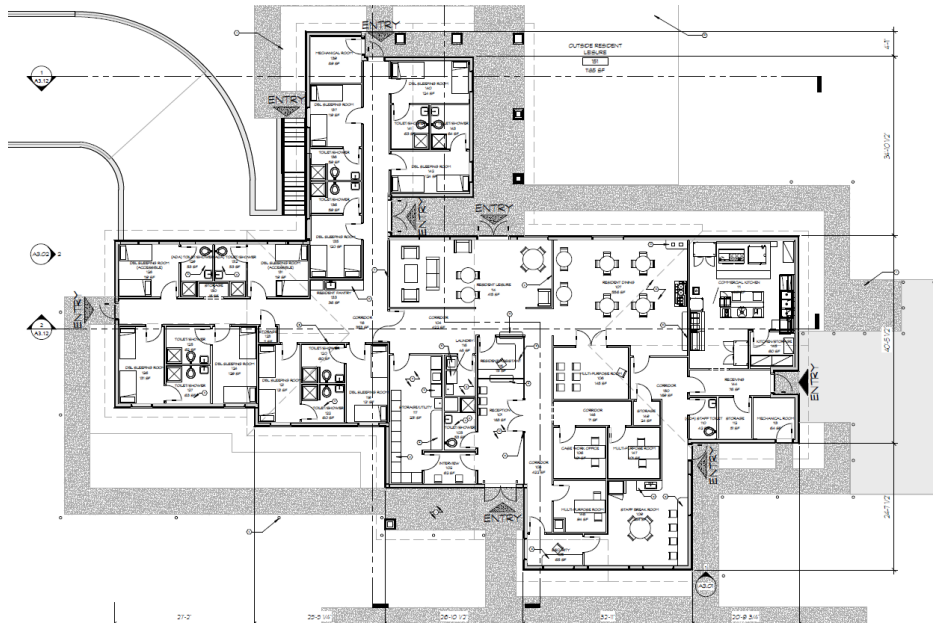
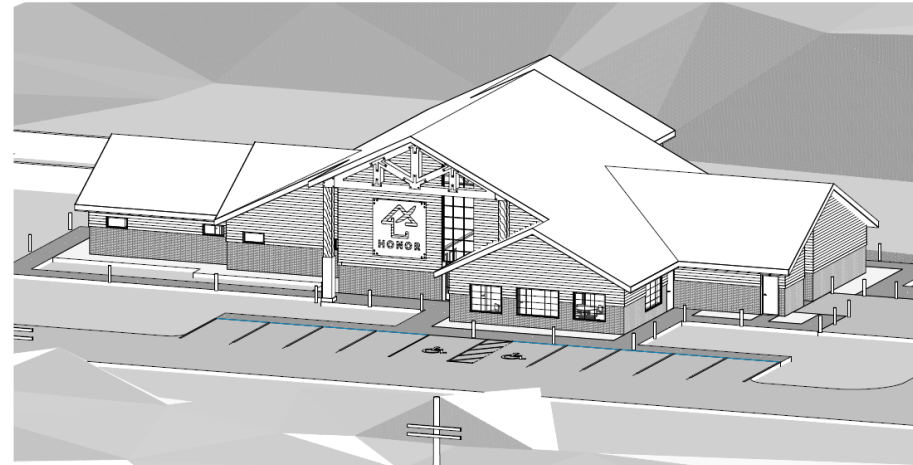


# *On Building a Housing Gateway to Support Sullivan County Residents*

*Sullivan County Department of Social Services*

# What is a Housing Gateway?

- ***What primarily sets this project apart from a hotel is the services it provides:***
  - *Trauma-informed, trained staff*
  - *Nutritious meals provided*
  - *Access to counseling and job readiness services onsite*
  - *Enhanced physical and personal security for belongings and guests*
  - *A more dignified place to rebuild a life*
- ***Current draft architectural plans include:***
  - *Commercial kitchen*
  - *Five confidential meeting spaces*
  - *10 double-occupancy rooms*
  - *Communal leisure and dining*
  - *Guest and facility laundry*
  - *Toilet and shower for public use*
  - *Locked storage for guests*



# Why do we need this Housing Gateway?

- **General Considerations**

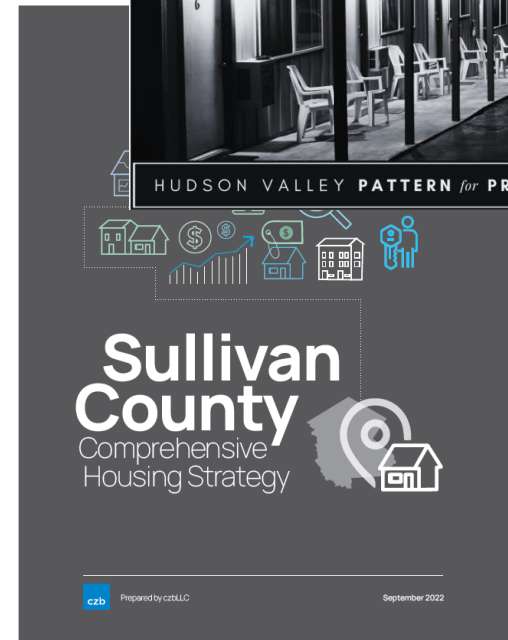
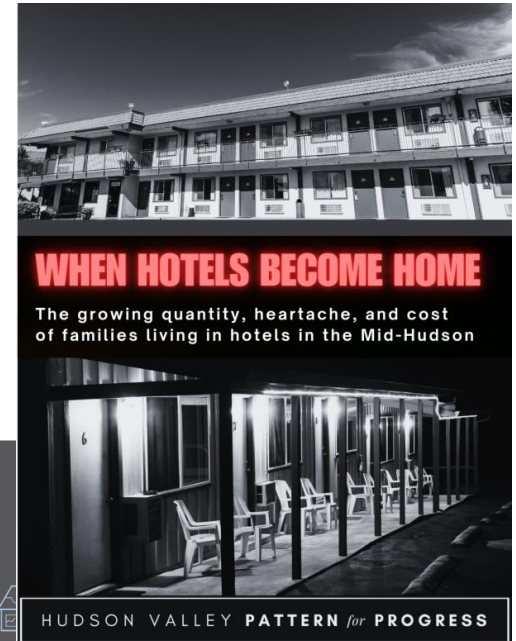
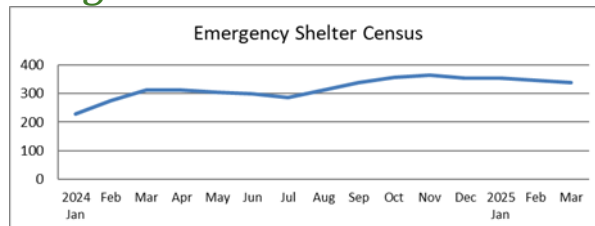
- Improved health outcomes
- Challenges of working with private businesses
- Enhance public safety
- Increase socialization, safety for clients

- **Demographic Considerations**

- Groups with other strategies that are working - Veterans, Domestic Violence Survivors, Families with Children
- Single adults much more likely to return to hotels after initial placement and supports provided

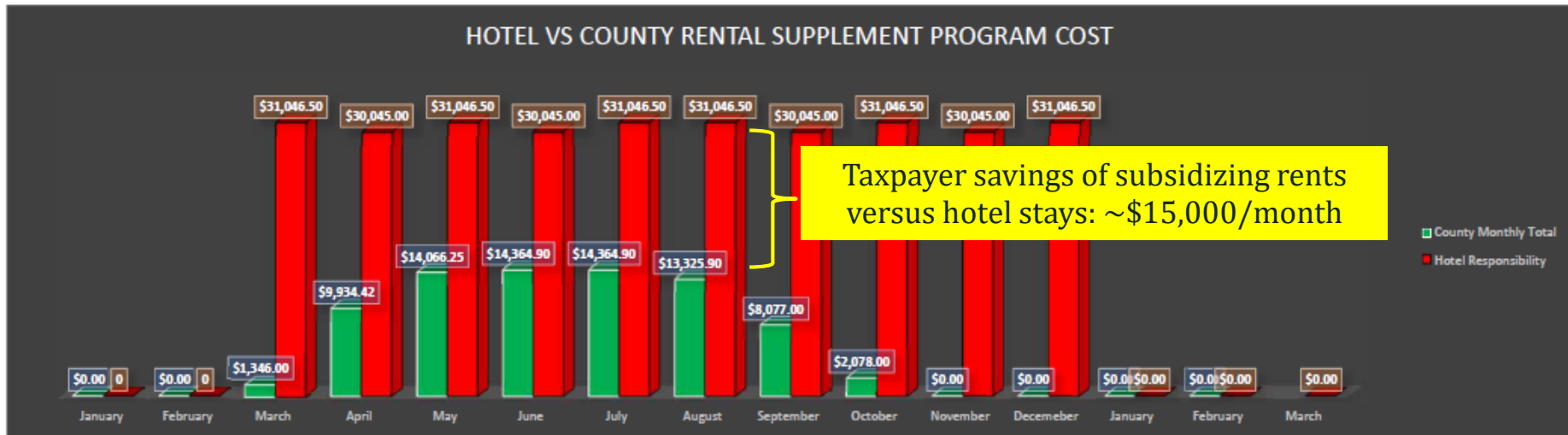
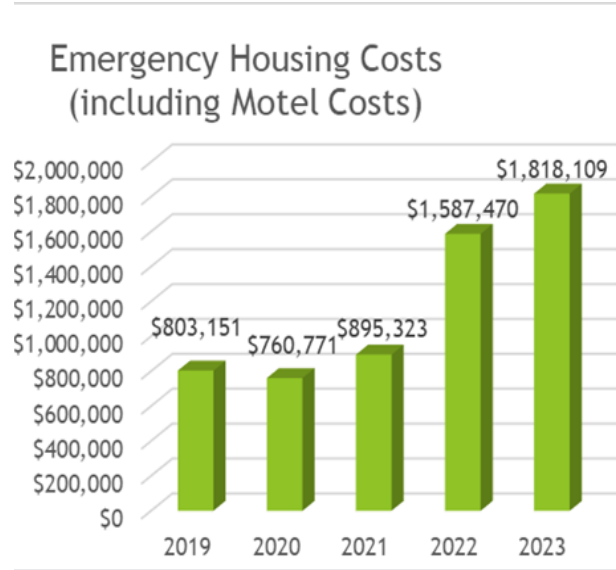
- **Size Considerations**

- A 20-bed facility will serve 80-100 persons/year
- Current emergency shelter census includes 139 single adults, on a slight downward trend.



# Why build this now?

- **Inflation, prevailing wage, and climate policy changes are accelerating construction costs.**
  - Conversion costs for hotels reach \$500,000 per unit.
  - Current estimate for this Center is \$400,000 per unit.
  - Our project will be competitive for an \$8million grant from NYS
- **Hotel costs are also accelerating rapidly.**
  - Final 2024 emergency housing cost: **\$3,493,975**
  - Emergency housing costs are 71% local / 29% state
  - When we can work with clients, we can get them to much cheaper housing solutions faster (see below)
- **There is an extensive public record telling us hotels are not the right answer for Sullivan County**
  - 2016 State Comptroller Report, 2024 Grand Jury Report



***End of Presentation – Additional Questions?***